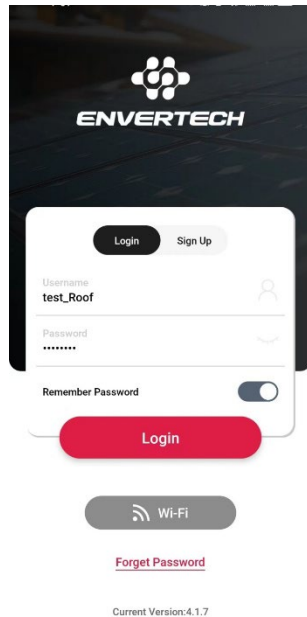


EnverView App User Guide- End User Account

EnverView is Envertech's monitoring APP. Envertechend users can log in their monitoring accounts on EnverView.

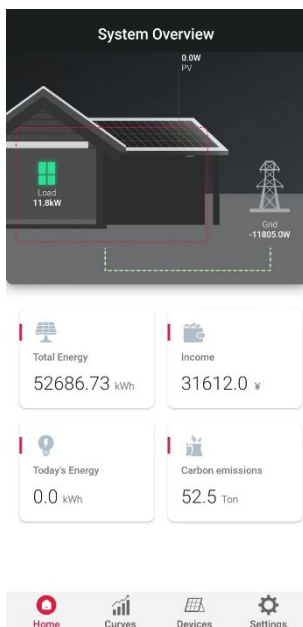
1. Login

First of all, download EnverView from the application store and login with your account.



2. Homepage

Below is the homepage after logging in .



Total Energy: the total energy produced by current login end user account to date.

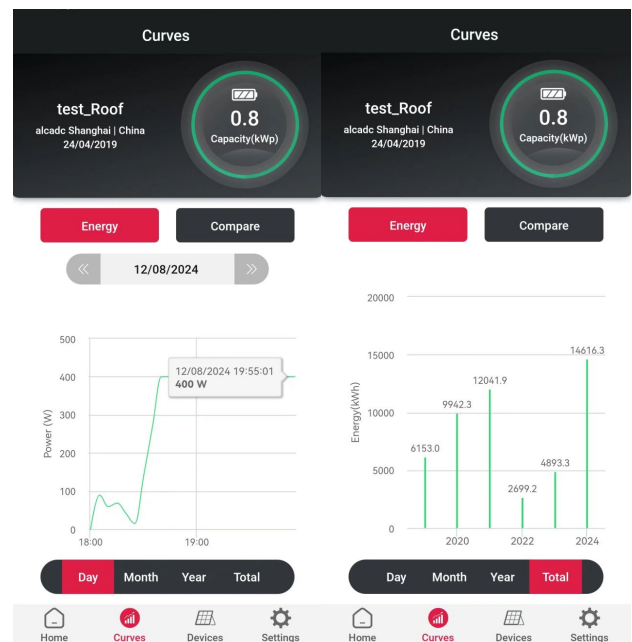
Current Power: the total generating power of the last piece of data uploaded by all inverters under the current login end user.

Today's Energy: the total power output of current login end useraccount on the current day.

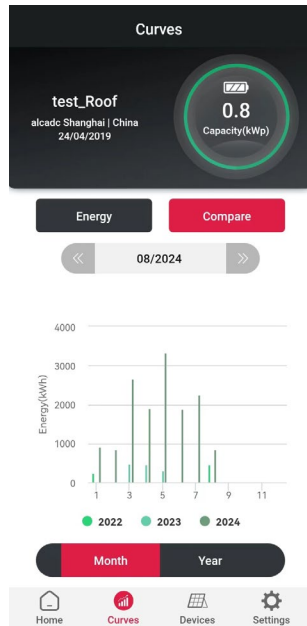
Carbon Offset: The amount of carbon emissions can be reduced by all the energy produced by current login end user.

3. Curves

Click "Curves" at the bottom. Here you can see the power curve of the day, the month, the year and the total corresponding to the date you select. Put your fingertip on the curve and the data at that time point will be displayed.

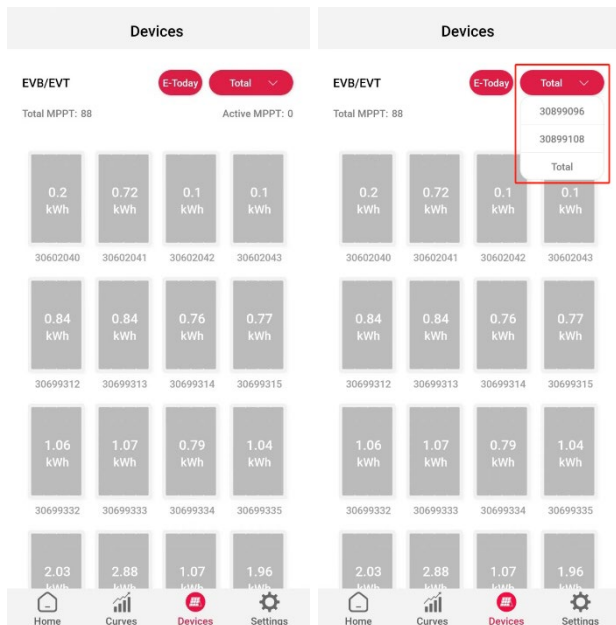


Click **“Compare”**, select **“Month”** and you will see the bar chart comparing the energy production by month up to the time selected. Select **“Year”** and you will see the bar chart comparing the energy production by year up to the year selected.

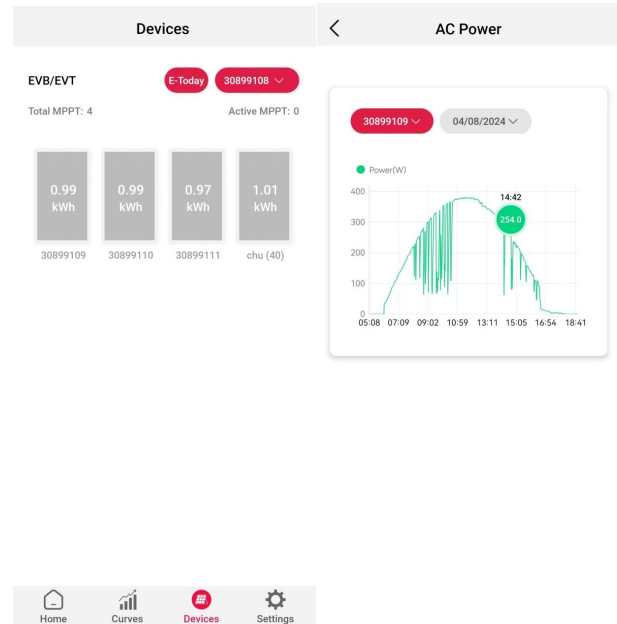


4. Devices

Click **“Devices”** in the bottom menu, and you will find the EnverBridge info and MI info under this end user account. Select different EnverBridge to read the corresponding data.

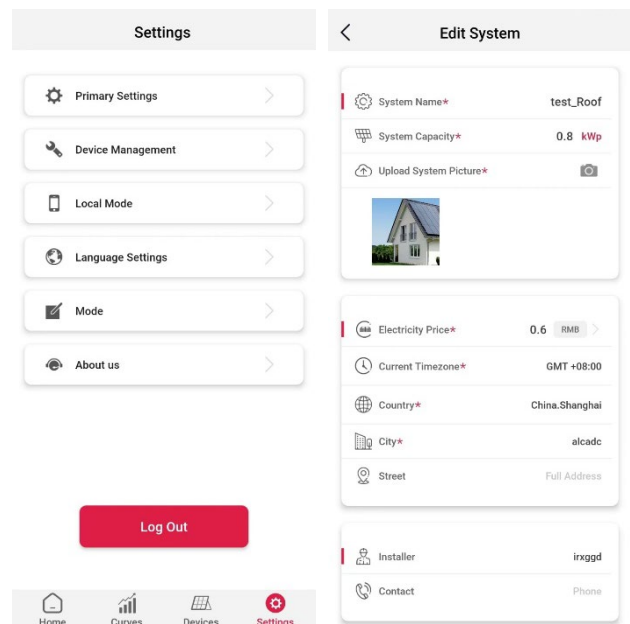


Scroll down the screen, then you can see the AC power curve as below. Put your fingertip on the curve and the realtime data will be displayed.

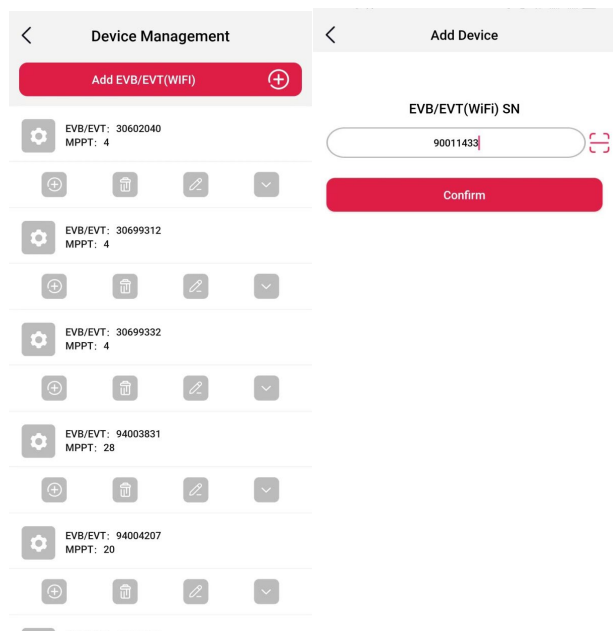


5. Settings

Under **“Settings”**, you can edit this system and manage its devices.

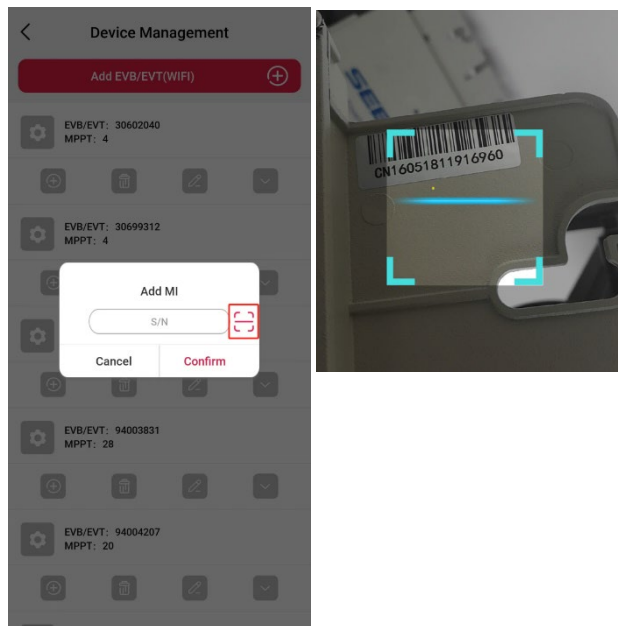


Under “**Device Management**”, click “+” on the upper right of the screen to add an EnverBridge.

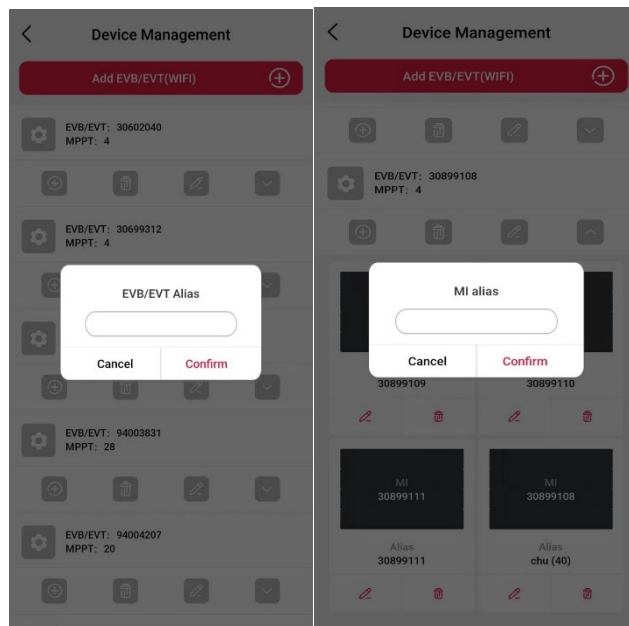


click “**Expand**” to see the full microinverter list.

Click “**Add**” to add a new microinverter under this EnverBridge. The SN of the microinverter can be typed into the input box, or you can click the barcode icon and scan the barcode on the microinverter for it to automatically show up in the input box. Click “**Confirm**” to finish adding the MI. This added MI will be in the microinverter list then.



Here you can also rename the EnverBridge and MIs.



6. Support

If you have any question or need, please don't hesitate to contact our tech support team via tech@envertec.com. We are at your service any time.